

Fingerprint Scanner Getting Started Guide
 Driver installation Guide
 Version 1.2



Bioenable Technologies Pvt Ltd
 Pune, India
 Telephone: +91-020-26127374
 Fax: +91-020-26141659
 Email: Info@bioenabletech.com
 Web: www.bioenabletech.com

Table of Contents:	Page No
1. Hardware and software requirements ,-----	1
2.. Driver installation steps-----	2
3. FAQ's-----	8

CONTENTS	DESCRIPTION
<i>Version</i>	1.2
<i>Guide release for software version</i>	N6.54N
<i>Date of release</i>	5-MARCH-2005
<i>Last updated as on</i>	5-MARCH-2005
<i>Support</i>	support@bioenabletech.com
<i>Online support</i>	bioenables@yahoo.com



1.0 Hardware & Software configurations

Hardware requirements:
 Pentium I 133 MHz processor & above
 64 MB RAM

Software Requirements
 Windows 98, 95, 2000, xp

1

2.0 In order to install drivers follow below mentioned steps



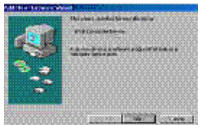
This is the typical USB cable pin which comes with the scanner.



Connecting a USB device to a computer is simple -- you find the USB connector on the back of your machine and plug the USB connector into it

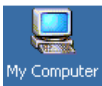
After you plug USB pin connector to USB plug, *New Hardware Wizard* found screen will get appear on the screen.

2



In this screen click on the cancel button to abort the process.

After this follow below mentioned steps to install drivers for scanner



Insert Installation CD into CD ROM. Then double click on the "My Computer" icon on the desktop



Double click on the CD ROM drive to browse CD

3



Drivers_CD

When user browse CD "Drivers_CD" folder will get displayed. Double click on the folder.



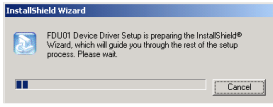
Setup

Inside this double click on setup.exe to start installation.

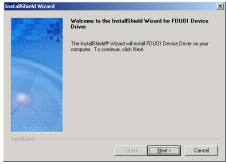


In this screen click on the "USB Driver" button.

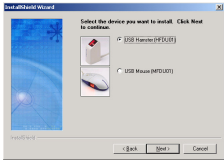
4



This wizard shows that now setup is ready to install drivers on pc.

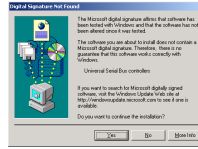


In this screen click on next button to continue with the installation.

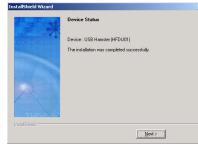


In this screen select USB Hamster option and click on the next button

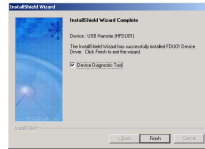
5



In this screen click on the yes button to accept the terms & conditions



In this screen click on the next button to continue with the installation.



In this screen click on the checkbox for "Device diagnostic tool" and click on the finish button

6

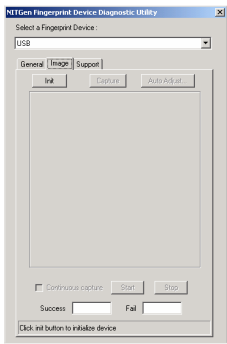


Figure 1.0

In this screen click on the "Init" button to initialize scanner. After that put finger over scanner & click on the capture button to take snap of the finger.

NOTE: This step will be followed in order to ensure that scanner is working properly. This step will not generate any log records or will not register user finger.

7

Thus after these steps drivers for scanner get installed in the system.



FAQ

1) When I start Biodesk (fingerprint scanner application) startup screen will not show any welcome message and shows message device drivers failed. So what can I do in this case?

Ans: This means that you have not installed drivers for scanner. Go through Page number 1 to install drivers for the application.

2) How should I know that drivers are installed in the system?

Ans: The simple procedure is, if your operating system is windows 2000 then & if drivers are installed previously then it creates one exe file in system folder by name "SGD.exe". Just double click on the file, and follow steps mentioned on page number 7 for figure 1.0. If drivers exists in the system then you can initialize scanner and capture image.

8